

Color Reduction Linocut

Relief Prints utilizing Line and Color Theory

Color reduction prints have a long history and were first made famous through Japanese Ukiyo-e prints by artists like Hokusai, who heavily influenced Impressionists like Monet. Using linocut techniques, and knowledge of the medium you will expand it using color theory. Color reduction prints are created with one block – Carving and Printing are done from light to darkest. Carve the white areas printing the lightest color - carve out what should remain the lightest color printing the medium color - carve out the medium values and print the darkest value. Look at the work of Hokusai, Chuck Close, or once you decide upon a subject do a search for “subject color linocut/woodcut” to see specific image examples. You may use a rainbow rollup.

Identify – Plan & Draw – Carve & Print

Identify – This assignment is open in subject though using some concept is recommended. It must be original and not infringe copyrights. Make it lend itself well to linocut as a medium.

Plan & Draw – In your Sketchbook **2 Thumbnails Required**

- Sketchbook – Write down ideas and/or gather imagery.
- Sketch ideas for your linocut
 - Design using white and at least two other colors
 - Create a detailed, scale drawing indicating color
- Get feedback from your peers through critique.

Transfer & Carve – Keep the detailed drawing intact

- Remember that you will transfer the image numerous times. Transfer #1 – Indicate areas that will be white and carve out. Take your time – once it is cut it is cut

Print – While printing each color print the entire edition of 6

- Print 6 of the lightest color with white carved out
- Transfer the areas that should remain the lightest color and carve them out. Print 6 of the medium color over the lightest color. Transfer what should be the darkest color and carve out what remains medium – print darkest color
- Edition



Stage 1



Stage 2



Stage 3



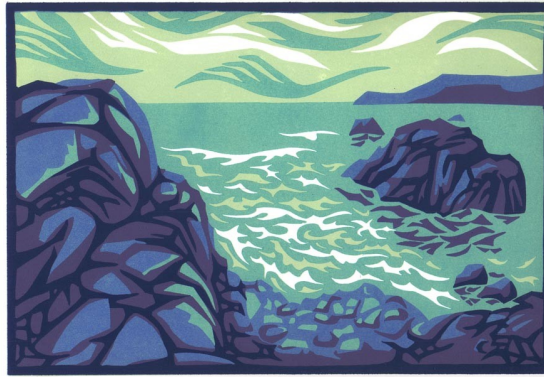
Hokusai

Artist Statement & Reflection

1. How did you decide upon your imagery? Did any artist influence your design? How? How is your design original?
2. Why did you make the color decisions that you did? Would you make any changes?
3. Which linocut technique do you prefer? Black & White, Hand-colored, or Color Reduction

Criteria

- ⇒ **3 Color Print (white + 2 colors)**
- ⇒ **Well Rendered Imagery**
- ⇒ **Dynamic Composition**
- ⇒ **Technical Proficiency in Prints**
- ⇒ **Working Habits & Presentation**



Rubric

Attach all Planning not in your Sketchbook to this paper with your Artist Statement and Reflection

	Advanced	Proficient	Developing	Needs Work	Score and/or Comments
3 Color 10 Points	White and at least two other colors utilized. Color use emphasizes subject matter and is printed well with good registration	White and at least two other colors utilized. Color use is basic but printed proficiently or is intentional but there are small issues with printing	White and at least two other colors utilized. Color use is very basic and/or is intentional but there are major issues with printing	Less than 3 colors utilized and/or major issues with color printing registration or color decisions	
Imagery - Originality & Ingenuity 5 Points	Solution for project is original, inspired and creative. Thoughtful planning	Solution to project is creative and planned. Some creativity shown.	Solution to project is so literal that little creativity or originality is shown	Solution is extremely basic and shows little to no creativity or originality	
Use of Line & Detail to Create Subject 10 Points	Line & Detail flow together and compliment each other in a well developed subject. Crisp lines that accentuate subject.	Line & Detail come together in a balanced way to form recognizable subject. May have some basic lines that are well done or some small bobbles	Line and Detail both utilized, but one may overwhelm the other or subject is undeveloped. May have some major issues from carving.	Line and Detail are not utilized together, subject not recognizable or drawing is very awkward or undeveloped	
Composition 5 Points	Balanced and Dynamic	Balanced centrally or symmetrically balanced or static	Somewhat awkward, unbalanced, large empty areas or floating subject	Unbalanced, Floating in space, large empty areas	
Working Habits 10 Points	Extremely focused and productive during studio time	Generally focused and on task during studio time	Sometimes focused, but needs reminders to stay on task	Excessive socializing, disruptive and unproductive	
Quality of Final Work 3 Prints Turned in 10 Points	Three prints are printed with good registration and editioned. Demonstrated mastery of Printing. Little to no technical issues.	Three prints are printed with good registration and editioned. Proficient Printing. Some minor technical issues.	Three or fewer prints are printed. Major issues with technical printing or late artwork.	Less than 3 prints. Major technical issues Artwork is incomplete, late, folds, dirty or not turned in	